

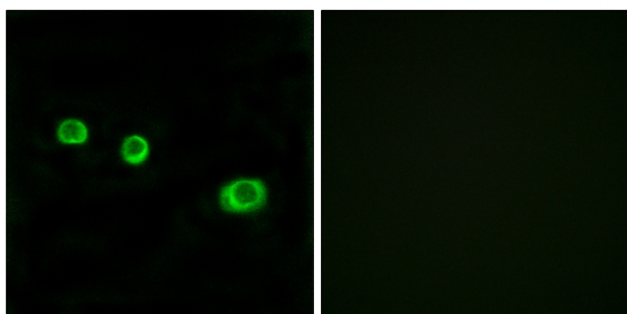


GBP1 Polyclonal Antibody

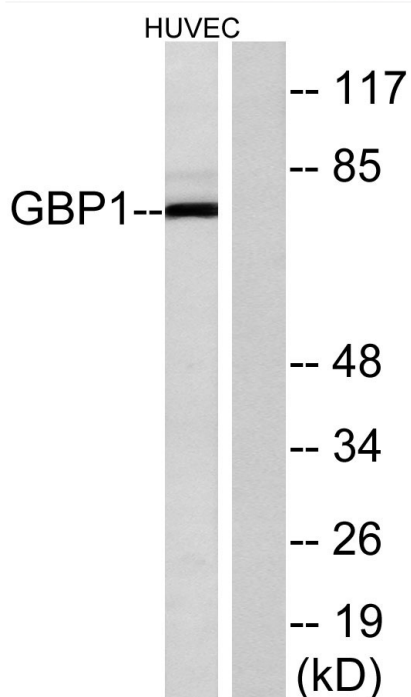
| | |
|----------------------------------|--|
| Catalog No | YP-Ab-16159 |
| Isotype | IgG |
| Reactivity | Human;Rat;Mouse; |
| Applications | WB;IF;ELISA |
| Gene Name | GBP1 |
| Protein Name | Interferon-induced guanylate-binding protein 1 |
| Immunogen | The antiserum was produced against synthesized peptide derived from human GBP1. AA range:71-120 |
| Specificity | GBP1 Polyclonal Antibody detects endogenous levels of GBP1 protein. |
| Formulation | Liquid in PBS containing 50% glycerol, 0.5% BSA and 0.02% sodium azide. |
| Source | Polyclonal, Rabbit,IgG |
| Purification | The antibody was affinity-purified from rabbit antiserum by affinity-chromatography using epitope-specific immunogen. |
| Dilution | Western Blot: 1/500 - 1/2000. Immunofluorescence: 1/200 - 1/1000. ELISA: 1/40000. Not yet tested in other applications. |
| Concentration | 1 mg/ml |
| Purity | ≥90% |
| Storage Stability | -20°C/1 year |
| Synonyms | GBP1; Interferon-induced guanylate-binding protein 1; GTP-binding protein 1; GBP-1; HuGBP-1; Guanine nucleotide-binding protein 1 |
| Observed Band | 68kD |
| Cell Pathway | Cytoplasm . Golgi apparatus membrane; Lipid-anchor ; Cytoplasmic side. Cell membrane . Secreted . Cytoplasmic vesicle . Secreted from endothelial cells in the cerebrospinal fluid, upon bacterial challenge and independently of IFNG induction. Golgi membrane localization requires isoprenylation and the presence of another IFNG-induced factor. |
| Tissue Specificity | Placenta,Spleen,Uterus, |
| Function | function: Binds GTP, GDP and GMP.,induction: By interferon gamma during macrophage activation.,similarity: Belongs to the GBP family., |
| Background | Guanylate binding protein expression is induced by interferon. Guanylate binding proteins are characterized by their ability to specifically bind guanine nucleotides (GMP, GDP, and GTP) and are distinguished from the GTP-binding proteins by the presence of 2 binding motifs rather than 3. [provided by RefSeq, Jul 2008], |
| matters needing attention | Avoid repeated freezing and thawing! |

Usage suggestions

This product can be used in immunological reaction related experiments. For more information, please consult technical personnel.

Products Images

Immunofluorescence analysis of MCF7 cells, using GBP1 Antibody. The picture on the right is blocked with the synthesized peptide.



Western blot analysis of lysates from HUVEC cells, using GBP1 Antibody. The lane on the right is blocked with the synthesized peptide.